

Programmes After Market Services
NPC-1 Series Transceivers

**Assembly & Disassembly
Instructions**

Table of Contents

	Page No
Disassembling the NPC-1 Basic Transceiver	3
Assembling the NPC-1 Basic Transceiver.....	8

Disassembling the NPC-1 Basic Transceiver

Remove the back cover.

1.

Step 1. Push down hard on the button.

Step 2. Slide the cover in the direction of the arrow.



2.

Remove the battery.

Step 1. Place fingers on both ends of the battery latch

Step 2. Push the latch away from the battery.
The battery will "bounce off".

3.

Remove the front cover.

Step 1. Get a firm hold on the phone around the accessory interfaces (in the D-cover).

Step 2. Hold the side of the front cover as indicated by the arrow in the D-cover.

Step 3. Lift the side up.



4.

Remove the PWB from the housing.
Remove 6 screws.

Note: The picture shows the assembly order.
Assembly is in the reverse order.



5.

Disassemble C- and D-covers.

Step 1. Place a screwdriver with a chisel point between the C- and D-covers' snap feature.

Step 2. Lift the D-cover.



Note: The screwdriver must not hit the engine module's components during disassembly.



6.

Step 3. Remove the system connector.

The system connector assembly should stay on the engine when the D-cover is moved. It can be removed manually.

Note: The use of gloves is mandatory while removing the system connector, in order to prevent fingerprints from appearing on the engine and the springs. The springs may be damaged, if touched.



7.

Step 4. Remove the engine module.

Note: The use of gloves is mandatory while removing the engine module, in order to prevent fingerprints from appearing on the engine.

The engine module can be removed manually.

Note:

If the RF shield lid is removed, replace it with a new one as it is vital that the shield is absolutely straight so that spurious radiation does not occur.

When removing the shield lid, please pay special attention to how it is done. The lid needs to be removed extremely carefully, so as not to damage any other parts of the radio module. Please use tweezers or a small screwdriver to remove the shield lid. Snap it open carefully.



8.

Remove the LCD module.

Step 5. Lift it off the C-cover.

Note: If the LCD module is to be reused, the use of gloves is mandatory to prevent fingerprints from appearing on the domes and elastomer connector. The domes and the elastomer connector may be damaged, if touched.



9.

Step 4. Remove the speaker assembly from the C-cover.



Note: Handle with care, as the speaker and the springs may be damaged, if touched.



10.

Remove the battery latch.

Step 5. Get a firm hold on the middle of the latch.

Step 6. Bend the latch and push it away from the antenna.

Remove the antenna.



11.

Step 7. Place a screwdriver with a flat head between the antenna and the D-cover.

Step 8. Lift the antenna.

Note: The antenna's snap feature may be damaged during disassembly. The broken snap will not prevent the reuse of the antenna.



12.

Step 9. Remove the IR-window.

You can remove the IR-window once the antenna has been removed.

Remove the battery connector.



13.

Step 10. Push the battery connector from the battery side to remove it.

Note: Do not reuse the battery connector after disassembly.



14.

Remove the release spring.

Step 11. Use a flat-headed screwdriver to remove the release spring from the D-cover.

The heat staking features will break during disassembly.

Note: The broken heat staking features will not prevent replacing a new release spring or buzzer onto the cover.



15.

Remove the vibra assembly.

Step 12. Lift the vibra assembly from its slot. Use a screwdriver or your finger.



16.

Remove the buzzer assembly.

Step 13. Place a screwdriver with a chisel-point between the buzzer assembly and the D-cover.

Step 14. Lift the buzzer assembly.

The heat staking features will break during disassembly.

Note: The broken heat staking features will not prevent the use of the buzzer.



17.

Remove the metal deck.

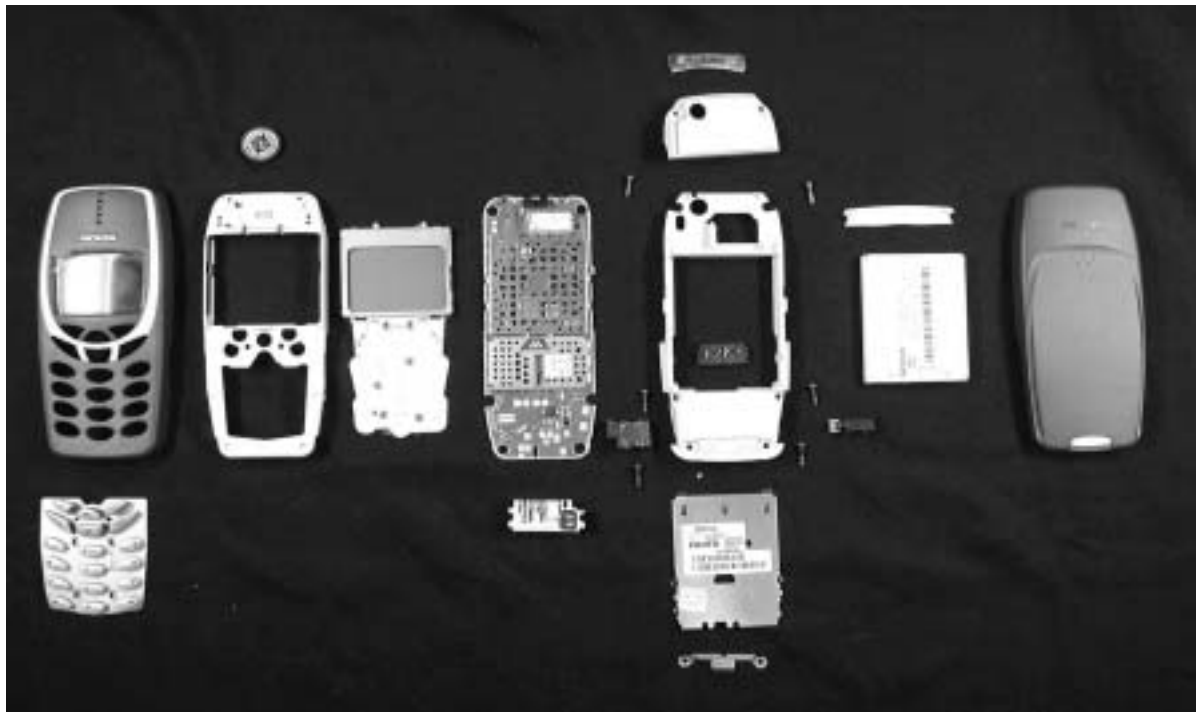
Step 15. Release the four side locks with a screwdriver.

Step 16. Push the metal deck from the engine's side.

Note: Do not reuse the metal deck after disassembly.



The main parts of the phone disassembled.



Assembling the NPC-1 Basic Transceiver



1.

Assemble the D-cover assembly.

Step 1. Assemble the metal deck from the back cover side by pressing it with your fingers.

All six tabs should snap into the slots in the D-cover.



2.

Step 2. Place the IR-window onto the D-cover before assembling the antenna.

Step 4. Press the antenna into its place.

Note: Make sure that the antenna springs do not get damaged or touched during assembly. No fingerprints should get on the springs.

3.



4.

Step 5. Place one end of the battery latch into the D-cover slot.

Step 6. Bend the latch and move the other end into the D-cover slot.

The battery connector will be assembled onto the D-cover with interference fixing.

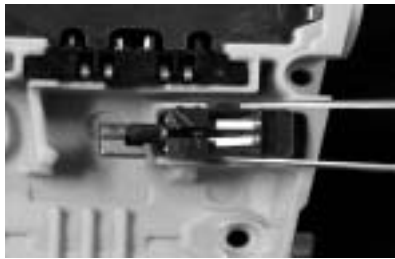
5.

Step 7. Place connector onto D-cover with tweezers.

Step 8. Push the connector into the D-cover slot with your fingers.



Note: Make sure that the battery connector is below the D-cover edges after assembly. If the buzzer- or vibra-assembly is in place, make sure that the buzzer springs stay intact. The may be damaged, if touched.



6.

Step 9. Place the vibra assembly into its slot. Use tweezers.

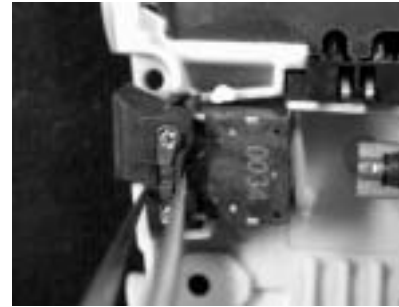
The vibra is assembled into the D-cover with interference fixing.

Note: If the battery connector or the buzzer assembly is in place, make sure that the battery connector springs and the buzzer springs stay intact. the springs may be damaged, if touched.

7.

Step 10. Place the buzzer assemble into its place. Use tweezers.

The buzzer is assembled into the D-cover with interference fixing.

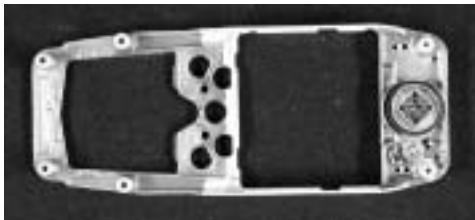


8.

Step 11. Place the release spring into the D-cover slot.

The release spring is attached onto the D-cover with screws that are used for attaching the C- and D-covers. No heat staking is needed.

Assemble the C-cover.



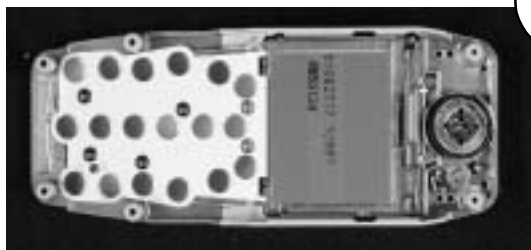
9.

Step 1. Check the condition of the screw holes. If they are worn out, change the cover.

Step 2. Place the C-cover into a jig. Make sure that the speaker with the speaker gasket is in place.

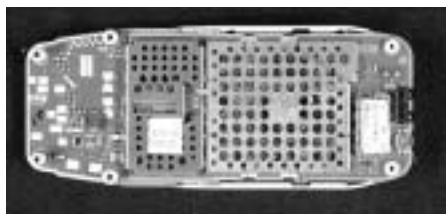
Note: Make sure that the speaker springs stay intact. They may be damaged, if touched.

Place the LCD-module onto the C-cover.



10.

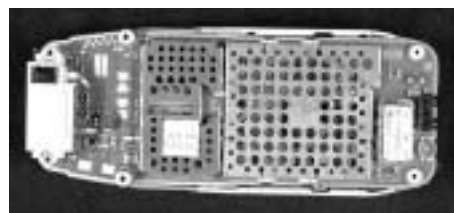
Note: the use of gloves or a vacuum picker is required, in order to prevent fingerprints from appearing on the LCD. Make sure that the elastomer connector and domes stay intact during assembly. Use compressed air or a vacuum before assembling the D-cover, in order to prevent dust from getting onto the engine layout.



11.

Place the engine module on top of the LCD-module.

Note: The use of gloves is mandatory in order to prevent fingerprints from appearing on the engine layout. Use ionized air or a vacuum, before assembling the D-cover, to remove dust and other foreign particles from the PWB assy.



12.

Place the system connector on top of the engine module.

Note: The use of gloves is mandatory in order to prevent fingerprints from appearing on the engine layout and system connector pads (charging pads). Make sure that the system connector springs stay intact. The springs may be damaged, if touched.

Assemble the D-cover assembly.

Step 1. Place the assembled D-cover on top of the C-cover.

Step 2. Press the D-cover to snap the side locks.

13.



14.

Assemble the screws.

Step 1. Fasten the 6 screws. The assembly order is shown in the disassembly section. The torque is 20 - 21 Ncm 350/RPM.

Assemble the keymat onto the front cover.

Step 1. Place the keypad onto the front cover before the cover is assembled to the basic transceiver.

Step 2. Press the keypad into its place.

15.



16.

Assemble the front cover onto the basic transceiver.

Step 1. First push the basic transceiver to the front cover's IR-window.

Step 2. Press the bottom part onto the front part, so that it snaps onto the front cover.

**17.**

Assemble the battery.

Step 1. Push the battery connector interface.

Step 2. Press the battery down so that the latch fits the battery in place.

Assemble the back cover.

Step 1. Place the back cover on the phone.

Step 2. Slide the cover so that the spring snaps the cover into place.

18.

